



# REFRESH AND RESTORE YOUR PONTOON BIMINI

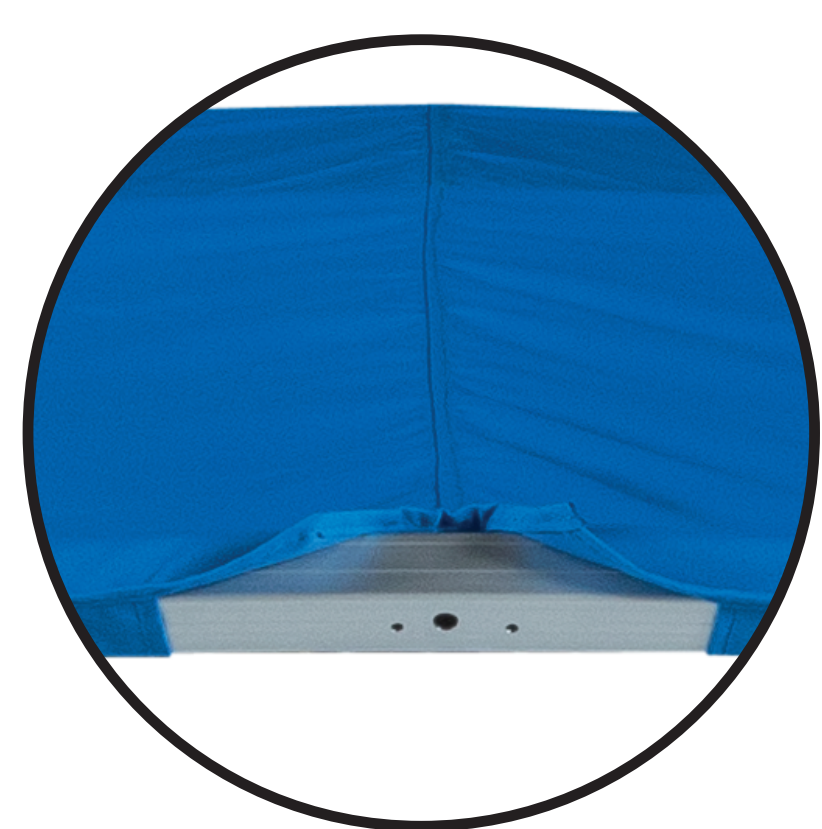


## TAYLOR MADE BIMINI TOP KITS



### ALUMINUM HARDWARE

Bright dip anodized  
1-1/4" aluminum framing



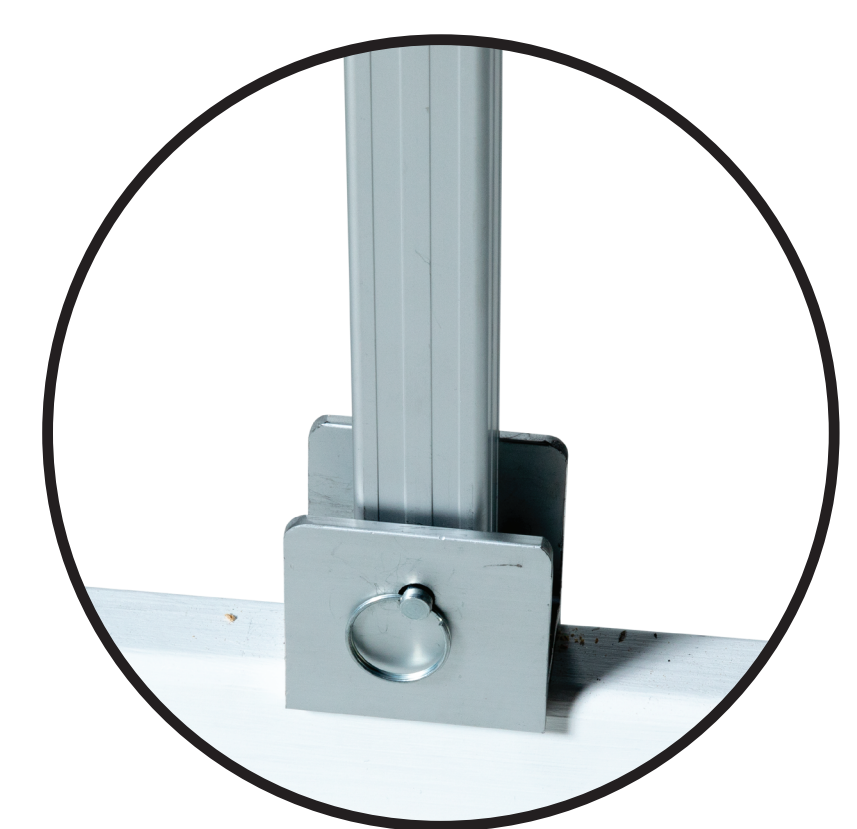
### 100% SOLUTION-DYED POLYESTER FABRIC

6.25 oz/square yard  
with light cut-out



### MATCHING BOOT INCLUDED

Quick and easy storage of  
your top in high winds



### EASY INSTALLATION

Designed to easily replace  
existing bimini top

New in 2021, our Bimini Top Kits for pontoon boats offer the frame, fabric and storage boots. These bimini kits fit 8' wide pontoon boats and are available in 8' and 10' lengths and are designed to fit a 1-1/4" railing. The four-bow bright dip anodized aluminum frame has a 1-1/4" square aluminum tubing for a sturdy and taut cover. Aluminum hardware and stainless-steel fittings are included for installation. You have your choice of seven fabric colors in a durable 100% solution-dyed polyester, 6.25 oz/sq. yard and includes a stern light cut-out.

### STANDARD COLORS



### ORDERING

Part #	Color	Size	Part #	Color	Size
<b>Pontoon Bimini Kit</b>			<b>Skin and Boot Only</b>		
88125	Black	8' x 8'	88132	Black	8' x 8'
88126	Grey	8' x 8'	88133	Grey	8' x 8'
88127	Green	8' x 8'	88134	Green	8' x 8'
88128	Navy	8' x 8'	88135	Navy	8' x 8'
88129	Burgundy	8' x 8'	88136	Burgundy	8' x 8'
88130	Beige	8' x 8'	88137	Beige	8' x 8'
88131	Pacific Blue	8' x 8'	88138	Pacific Blue	8' x 8'
88140	Black	8' x 10'	88147	Black	8' x 10'
88141	Grey	8' x 10'	88148	Grey	8' x 10'
88142	Green	8' x 10'	88149	Green	8' x 10'
88143	Navy	8' x 10'	88150	Navy	8' x 10'
88144	Burgundy	8' x 10'	88151	Burgundy	8' x 10'
88145	Beige	8' x 10'	88152	Beige	8' x 10'
88146	Pacific Blue	8' x 10'	88153	Pacific Blue	8 x 10
<b>Aluminum Frame Only</b>					
88139	--	8' x 8'			
88154	--	8' x 10'			

